



RTV *RTV520*

KUBOTA MIDSIZE UTILITY VEHICLE

For Earth, For Life
Kubota



Kubota Australia Pty Ltd

25-29 Permas Way, Truganina VIC, 3029 Australia
 Freecall: 1800-334-653
 Email: sales@kubota.com.au

Web Site: <http://www.kubota.com.au>

Kubota New Zealand Limited

433 Rangitikei Street, Cloverlea, Palmerston North, 4412 New Zealand
 Freecall: 0800-582-682
 Email: sales@kubota.com.au

Web Site: <http://www.kubota.co.nz>

Available from -



©2020 Kubota Corporation

**Kubota
 Genuine Parts**
 for maximum
 performance,
 durability and
 safety



*This information is sourced from overseas and may not necessarily apply locally. It is essential that you confirm specifications and other information with your local Kubota dealer.

EVOLUTION OF THE KUBOTA WAY.



RTV900

2004

Kubota introduced its first utility vehicle. The RTV900 was based on Kubota's highly developed tractor technology.



RTV1100

2006

The industry's first A/C factory cabin model, the RTV1100 offered the RTV900's excellent steering stability and workability plus a new level of comfort even in harsh environments.



RTV500

2008

Kubota's first mid-size model, the RTV500 greatly expanded the Kubota RTV line by offering a quiet, water-cooled, 2-cylinder petrol engine and enhanced transmission that improved driving stability at low speeds.



RTV-X-Series

2013

Widely recognised as the most reliable and hard working diesel utility vehicle on the market, the RTV-X Series can be found working on farms and lifestyle properties, construction sites, and municipalities. With the RTV900's exceptional stability at low speeds, superior comfort, and outstanding workability, the RTV-X inaugurated a new era in utility vehicle performance.

SIDEKICK

RTV-XG850

2018

Developed to meet the demands of farmers and recreational users alike. Customers loved the speed and durability of the vehicle. With its launch, Kubota welcomed new customers, like weekend explorers who appreciated the versatility the Sidekick delivers.



ALL NEW RTV520

2020

Today, Kubota introduces the RTV520. With a bold new look, improved suspension, increased engine displacement, and redesigned seating, the RTV520 builds upon the RTV500's success to set an even higher standard in performance and comfort.

In every Kubota RTV beats the heart of a tractor. That's because Kubota RTVs are based on the same development and manufacturing philosophies behind Kubota's reliable diesel tractors. Since the original RTV900, every Kubota RTV has been built on this foundation of quality and reliability.

RTV TRACTOR

First Aust & NZ Tractors

1977

In 1977, Kubota introduced compact tractors, marketed with the tag line "For people who want more than just a garden tractor."



B-Series

1980

B7100 was the first tractor in its segment that was developed with a hydrostatic transmission. With its launch, sales skyrocketed.



BX-Series

2000

Perfectly positioned between a garden tractor and Kubota's B-Series, the BX made Kubota the first in the industry to offer a true "sub-compact tractor".



M-Series

2006

A full-scale model change for 2006 introduced a re-engineered and redesigned M-Series. Built to tackle just about anything you throw at it, the M-Series is one of Kubota's most durable and efficient to date, boasting a long list of power and comfort improvements.



M7-Series

2017

The cleanest, most capable, and most powerful tractor Kubota ever built, the M7-Series marked the first time that a Kubota tractor achieved 170 HP.

MIGHTY CAPABILITY. NIMBLE PACKAGE.



Nimble and mighty, the RTV520 is built for home and job site. It has the capability to get more done, in more areas, with ease and comfort. With easy operation and ownership, it is the perfect vehicle for even the most novice driver and still meets the demands of a work site with the perfect blend of performance and comfort.



EVERYDAY PERFORMANCE
WORRY-FREE OWNERSHIP
GET THERE COMFORTABLY
ACCESS ANY AREA



EVERYDAY PERFORMANCE.



No matter where you go or what job you need to get done, you can count on the RTV520 to make easy work of it, every single time. A liquid-cooled Kubota engine delivers more than 17 horsepower, while the VHT transmission provides single-pedal operation and hill-hold support to increase driver confidence no matter the terrain. The heavy-duty cargo bed with dump capabilities and a towing capacity of 530 kg make quick work of every project on your to-do list.

Powerful Kubota Liquid-Cooled EFI Engine

A more powerful 2-cylinder engine provides increased horsepower, with quiet and reliable muscle for any job. Kubota-built, the durable engine is liquid-cooled to improve efficiency and ensure consistent performance throughout the day. Electronic Fuel Injection (EFI) makes starting the engine in cold-weather easier, and provides instant power with greater throttle control.

Variable Hydrostatic Transmission (VHT)

The RTV520's Variable Hydrostatic Transmission (VHT) provides exceptional performance on any terrain with smooth and powerful acceleration. Low-speed driving is made exceptional through smooth throttle control, great traction and increased maneuverability. Plus dynamic braking increases driver confidence with one-pedal operation when traveling downhill and makes jobs that require frequent stops easier.

Heavy-Duty Cargo Bed

The cargo bed is where work gets done. That is why the RTV520 comes with a large bed (1033 mm x 854 mm) and 200 kg cargo capacity, helping you tackle whatever the day brings. A wide opening gives you plenty of space to work, making loading and unloading the bed easy. Plus heavy-duty steel cargo tie-down hooks help keep your gear and cargo secure, even when the terrain is unforgiving.

Capable Towing Capacity

The reliable engine delivers capable towing capacity, made simple with a standard trailer hitch for greater versatility and an ability to attach trailers or pull-behind equipment. For those who refuse to compromise, the mighty RTV520 can tackle even the toughest jobs with its 530 kg towing capacity.



WORRY-FREE OWNERSHIP.



No matter how experienced you are behind the wheel of a utility vehicle, the machine needs to make your life easier. The RTV520 does just that with worry-free ownership, made possible with reduced maintenance, enhanced protection for key components, and easy operation. Rest assured you have a vehicle you can rely on day in, day out.

Easy Operation

The vehicle is designed to be easy to operate for any driver, regardless of experience. This is made possible with the VHT, where one-pedal operation, smooth acceleration, and engine-braking increase driver confidence and security.

Maintenance Made Simple

A large cargo bed opening and a closing angle of 52.3 degrees provides easy access to components underneath for quick and simple maintenance. Plus the VHT does not have a belt, removing a component that traditionally requires replacing. These benefits keep your vehicle ready for any job, by reducing the trips required to get it serviced or repaired.

Durable Design, Protected Components

Building on the Kubota Design Excellence that comes standard

on every Kubota product, the RTV520 stands apart by protecting key components of the vehicle. Areas of the vehicle like the underbody, and beneath the cargo box and operators station were designed to protect the machine from the unexpected, enhancing the durability of the vehicle.

Metal Cargo Bed

Unlike the plastic cargo beds found on competing utility vehicles, the RTV520 features a durable metal cargo bed that can withstand hard use.

New Radiator with Screen

The RTV520's radiator features a screen that prevents mud and grass from sticking to the radiator. A window improves accessibility for cleaning and maintenance.

GET THERE COMFORTABLY.



Enjoy a smooth, and comfortable ride, thanks to the RTV520's improved suspension and softer seat. The engine improvements also deliver reduced vibration and a quieter ride.

Capable Suspension System

The robust and reliable system features a new 5-link rear system which helps prevent the vehicle from bottoming out and improves rider comfort, even in rough terrain.

Comfortable Seat Design

The stylish matte-black and contoured seats have been redesigned with a 30% softer padding material, to provide better comfort during long rides.

Quiet Engine

A new, water-cooled 2-cylinder engine produces less noise than both the competition and previous models, making for a quiet and enjoyable ride.

Smooth Operating Experience

The 360-degree crank and two axis balancer significantly reduces the vibration from the engine, also reducing the feedback to the drivers hands and arms. Drivers can stay focused on the job at hand, even after a long day of work.



ACCESS ANY AREA.



Access any area with the nimble stature and maneuverability of the RTV520. At 1390 mm wide, you can easily access narrow roads and squeeze through tight gates. The vehicle is very easy to turn. When combined with a tight turning radius, the RTV520 unlocks areas all over your property or worksite.

Narrow Stance

The RTV520's compact dimensions let you nimbly maneuver into and out of tight spaces with ease.

Tight Turning Radius

With a tight turning diameter of just 6.62 m, the RTV520 can work in narrow sites where bigger utility vehicles can't go.

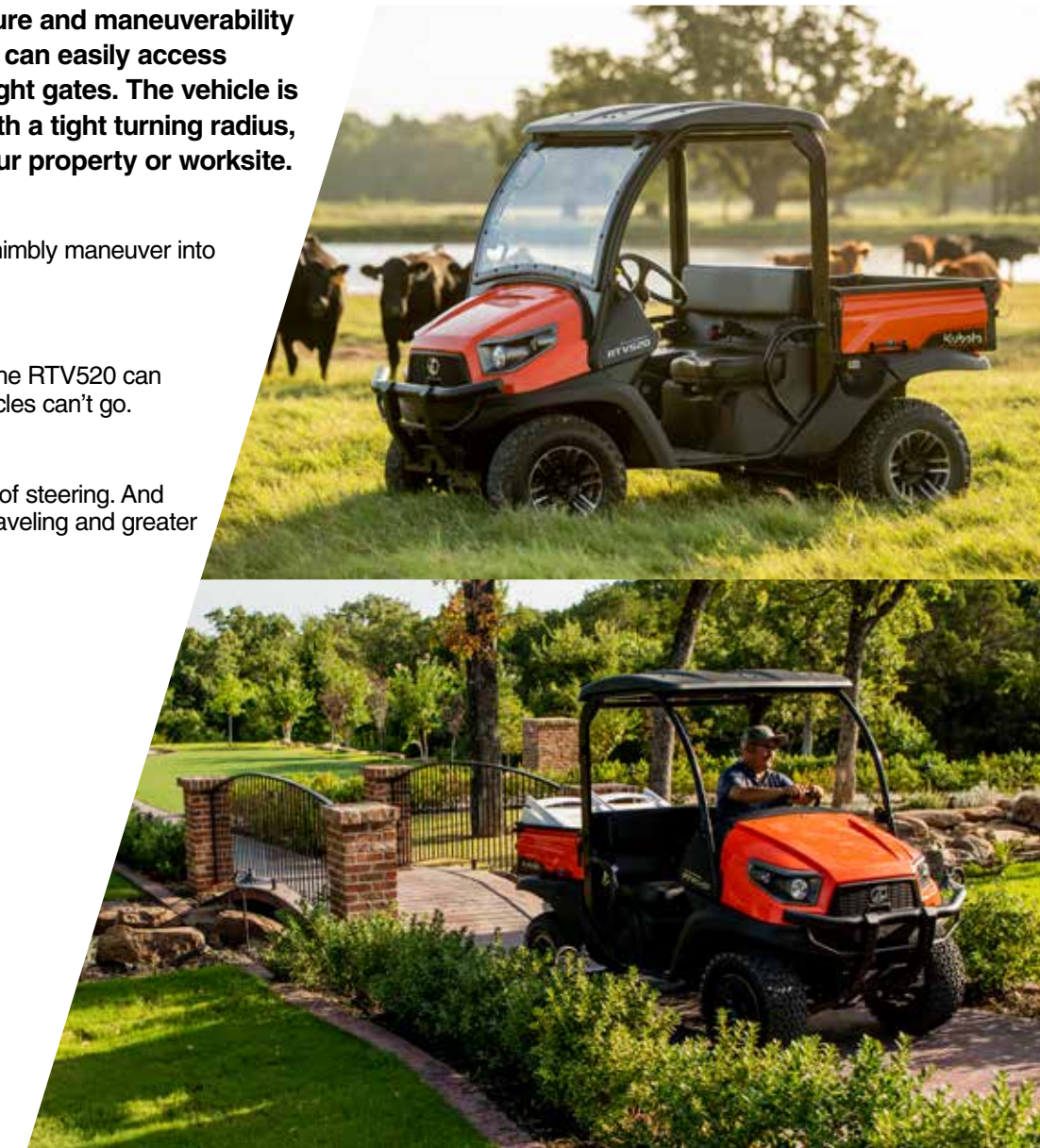
Easy to Turn

RTV520's steering system makes light work of steering. And that means less fatigue after a long day of traveling and greater productivity on the site.

1390 mm



1880 mm



CUSTOMIZE YOUR RIDE.



UPGRADE YOUR STYLE.



- A. Upper Glass Windshield
- B. Lower Poly Windshield
- C. Plastic Canopy

ENHANCE VERSATILITY.



Glove Box



Front LED Work Lights



Front Guard



Front Accessory Box



Rear LED Work Light



Alloy Wheel with ATV or HDWS Tyre (Optional)



WARN VRX 2,500 lbs Winch

Specifications

Model Name		RTV520	
Type		General Purpose	
Body colour		Orange	
Engine	Type	2-cylinder, Petrol, OHC, Water-cooled, EFI	
	Displacement	cc	514
	Horsepower	HP (kW) / rpm	17.4 (13.0) / 3600 ^{*1}
Fuel tank capacity		ℓ	19.2
Transmission		VHT PLUS Variable Hydro Transmission	
Max. travelling speed		km/h	40
Wheels, drive system		4, 4WD w/2WD selection	
Differential lock		Standard; hand operated with mechanical holder	
Gear selection		Hi-Lo range forward, neutral, reverse	
Brakes	Front / Rear	Dry-disc brakes	
	Parking brake	Rear wheel, hand lever	
Steering		Rack & Pinion	
Suspension	Front / Rear	Independent, Mac-Pherson strut-type / Semi-independent, multi-link	
	Length	mm	2670
Dimensions	Width	mm	1390
	Height, overall	mm	1880
	Front tread centres	mm	1020
	Rear tread centres	mm	1040
	Wheelbase	mm	1800
	Ground clearance front/rear axle	mm	225 / 170
	Turning diameter	m	6.62
Max. rolling weight (towing capacity)		kg	530
Payload capacity		kg	424
Weight		kg	625
Cargo bed	Width × Length × Depth	mm	1033 × 854 × 286
	Volume	m ³	0.25
	Bed height (unloaded)	mm	873
	Cargo bed load	kg	200
Tyres	Front	24 × 9-12 ATV, 6PLY	
		24 × 9-12 HDWS, 6PLY	
	Rear	24 × 11-12 ATV, 6PLY	
		24 × 11-12 HDWS, 6PLY	
Alloy wheel		OPT.	
Speedometer		OPT.	
Front guard		OPT.	
Headrest		OPT.	

^{*1} SAE J 1940 Net
The company reserves the right to change the above specifications without notice. This brochure is for descriptive purposes only.